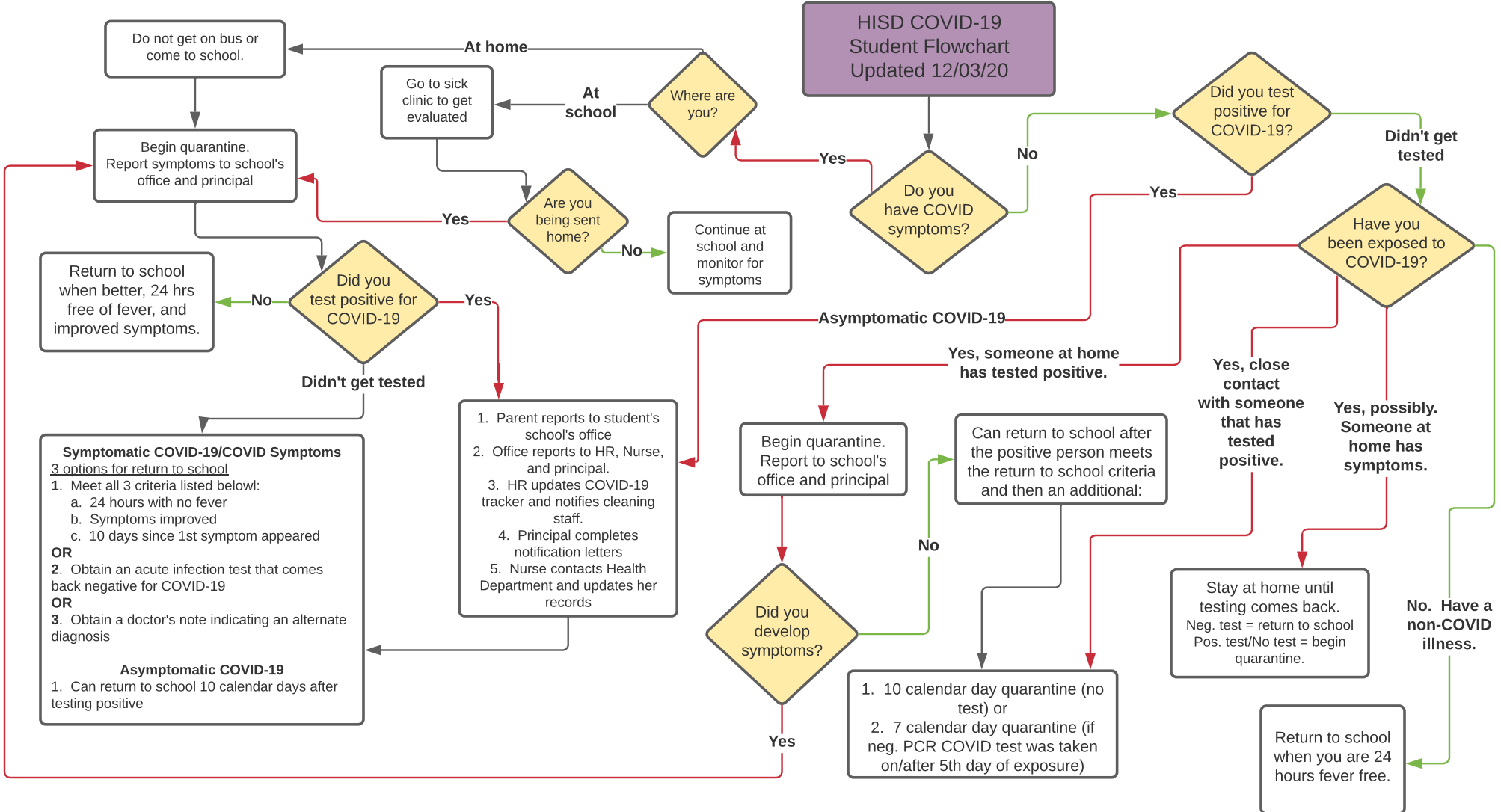


**HISD COVID-19 Student Flowchart Updated 12/03/20**



**Definition of close contact:**

1. Directly exposed to infectious secretions

OR

2. Being within 6 ft. for a cumulative duration of 15 minutes (additional factors like face coverings may affect decision) AND occurred during the infectious period (2 days before symptom onset to 10 days after symptom onset)

Contact tracing will be used to determine who is considered to have been in close contact to an individual that tested positive. Holland ISD administration will conduct the contact tracing for Holland ISD students for the time they were at school, if the student was on campus 48 hours prior to either COVID symptoms or an asymptomatic positive test result.

You are considered symptomatic for COVID-19 if you have one of the following:

1. Loss of taste OR
2. Loss of smell OR
3. Temperature of 100 degrees or higher and one of the following:
  - a. Cough
  - b. Difficulty breathing/Shortness of breath
  - c. Fatigue
  - d. Headache
  - e. Chills
  - f. Sore throat
  - g. Congestion
  - h. Diarrhea/Nausea/Vomiting
  - i. Significant muscle pain or ache